

По вопросам продаж и поддержки обращайтесь:

Алматы (7273)495-231  
Ангарск (3955)60-70-56  
Архангельск (8182)63-90-72  
Астрахань (8512)99-46-04  
Барнаул (3852)73-04-60  
Белгород (4722)40-23-64  
Благовещенск (4162)22-76-07  
Брянск (4832)59-03-52  
Владивосток (423)249-28-31  
Владикавказ (8672)28-90-48  
Владимир (4922)49-43-18  
Волгоград (844)278-03-48  
Вологда (8172)26-41-59  
Воронеж (473)204-51-73  
Екатеринбург (343)384-55-89  
Иваново (4932)77-34-06  
Ижевск (3412)26-03-58  
Иркутск (395)279-98-46  
Казань (843)206-01-48

Калининград (4012)72-03-81  
Калуга (4842)92-23-67  
Кемерово (3842)65-04-62  
Киров (8332)68-02-04  
Коломна (4966)23-41-49  
Кострома (4942)77-07-48  
Краснодар (861)203-40-90  
Красноярск (391)204-63-61  
Курган (3522)50-90-47  
Курск (4712)77-13-04  
Липецк (4742)52-20-81  
Магнитогорск (3519)55-03-13  
Москва (495)268-04-70  
Мурманск (8152)59-64-93  
Набережные Челны (8552)20-53-41  
Нижний Новгород (831)429-08-12  
Новокузнецк (3843)20-46-81  
Новосибирск (383)227-86-73  
Ноябрьск(3496)41-32-12

Омск (3812)21-46-40  
Орел (4862)44-53-42  
Оренбург (3532)37-68-04  
Пенза (8412)22-31-16  
Пермь (342)205-81-47  
Петрозаводск (8142)55-98-37  
Псков (8112)59-10-37  
Ростов-на-Дону (863)308-18-15  
Рязань (4912)46-61-64  
Самара (846)206-03-16  
Санкт-Петербург (812)309-46-40  
Саранск (8342)22-96-24  
Саратов (845)249-38-78  
Севастополь (8692)22-31-93  
Симферополь (3652)67-13-56  
Смоленск (4812)29-41-54  
Сочи (862)225-72-31  
Ставрополь (8652)20-65-13  
Сургут (3462)77-98-35

Сыктывкар (8212)25-95-17  
Тамбов (4752)50-40-97  
Тверь (4822)63-31-35  
Тольятти (8482)63-91-07  
Томск (3822)98-41-53  
Тула (4872)33-79-87  
Тюмень (3452)66-21-18  
Улан-Удэ (3012)59-97-51  
Ульяновск (8422)24-23-59  
Уфа (347)229-48-12  
Хабаровск (4212)92-98-04  
Чебоксары (8352)28-53-07  
Челябинск (351)202-03-61  
Череповец (8202)49-02-64  
Чита (3022)38-34-83  
Якутск (4112)23-90-97  
Ярославль (4852)69-52-93

Россия +7(495)268-04-70

Казахстан +7(7172)727-132

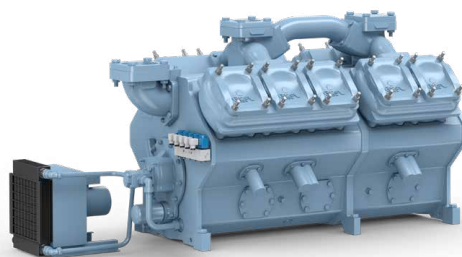
Киргизия +996(312)96-26-47

<https://gea.nt-rt.ru/> || [gsg@nt-rt.ru](mailto:gsg@nt-rt.ru)

# КОМПРЕССОРЫ ПРОМЫШЛЕННЫЕ

## GRASSO V HS

### Технические характеристики



# High speed reciprocating compressors for more capacity

GEA's industrial reciprocating compressors stand for reduced total cost of ownership (TCO) thanks to less power consumption and maximum reliability. This proven concept is now also available at higher speed.

It offers a higher refrigeration capacity against a lower investment. The speed increase provides clients with a significant increase in capacity. Because of the proportional correlation of compressor speed, swept volume and resulting capacity, 25 % more capacity can now be gained using the same models. That returns a significant improvement (reduction) of the relative price as in Kilowatts per Euro. Alternatively, users with a specific, fixed capacity requirement can benefit from the higher speeds by allowing them to achieve the capacity demands with smaller compressor equipment meaning less investment and less service expenses. Compressors at higher speeds offer significant savings potentials for your Total Cost of Ownership, reduced footprint and CO<sub>2</sub> emissions.

## FEATURES AND BENEFITS



### Increased capacity

- Providing more capacity, reducing investment costs



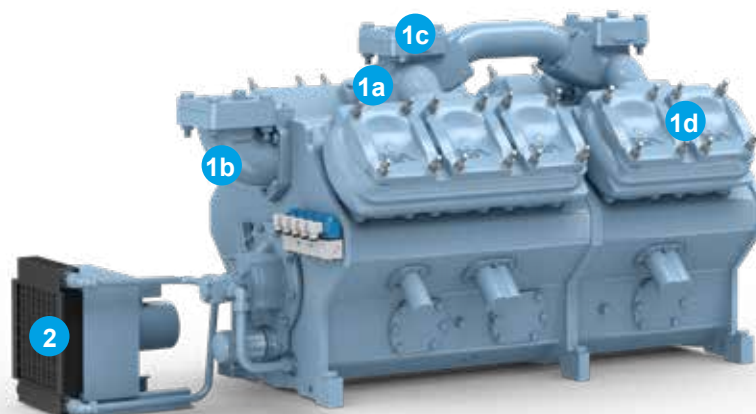
### Reduced footprint

- Using smaller compressors at higher speed



### Environment-friendly

- Zero GWP (Global Warming Potential) due to exclusive use of the natural refrigerant NH<sub>3</sub> (ammonia)



GEA Grasso V HS – standard scope of supply

## 1. Compressor

### • a) Safety first

Counter pressure independent overflow valve(s) between suction and discharge chamber to secure a safe operation.

### • b) Optimized suction gas entry

Oversized suction gas chamber and optimized filtering and distribution results in low pressure drop and increased resistance against liquid hammer.

### • c) Minimized oil carry-over

The oversized common suction chamber, the position of the cylinder liners, as well as the increased distance between oil sump and crankshaft (and lower internal temperatures) result in an extremely low oil carry-over. The necessity of using an oil separator is subject to application and, in some cases, can be omitted.

### • d) Maximum lifetime

- Composite material for suction and discharge valves.

- Free-flow discharge valve configuration with gas damping chambers.
- High volume and low gas velocity suction chamber.

## 2. Oil cooler

- Oil temperatures within acceptable limits
- Easy air cooled

## 3. GEA Omni control panel (recommended)

- High definition 15.6" display (1,366 × 768 pixel)
- Remote access via GEA OmniLink™
- Full data history via GEA OmniHistorian™
- Configurable Modbus TCP Ethernet communication
- Other common communication protocols supported

## 4. Oil separator (recommended)

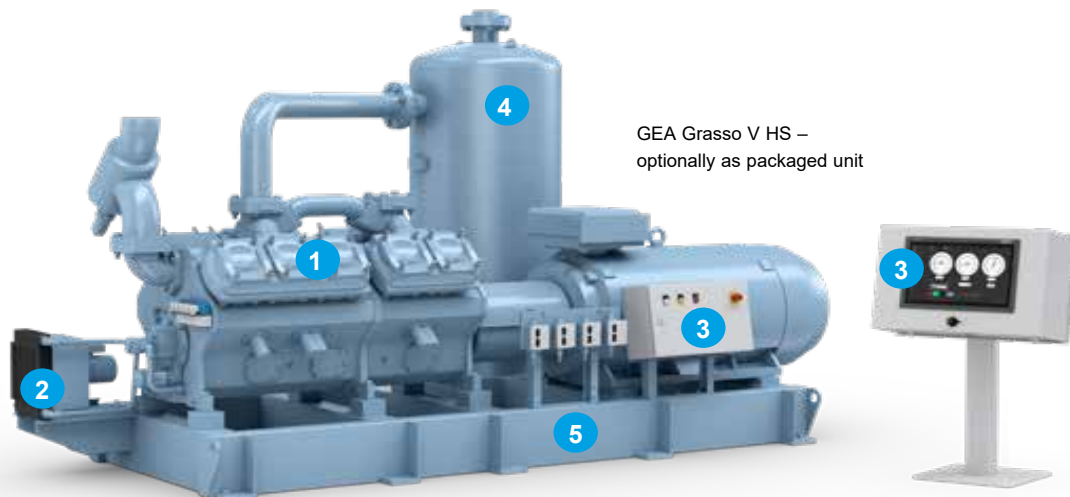
- Reduced oil consumption
- Low oil costs

## 5. Base frame (recommended)

- Solid base frame for thorough construction

## TECHNICAL DATA

Single stage	Number of cylinder	Standard speed (rpm)	Swept volume (m <sup>3</sup> /h)	Cooling capacity -10/+35 °C (kW)
GEA Grasso V 700HS	4	1,500	796	459
GEA Grasso V 1100HS	6	1,500	1,194	688
GEA Grasso V 1400HS	8	1,500	1,593	917
GEA Grasso V 1800HS	10	1,500	1,992	1,146



По вопросам продаж и поддержки обращайтесь:

**Алматы** (7273)495-231  
**Ангарск** (3955)60-70-56  
**Архангельск** (8182)63-90-72  
**Астрахань** (8512)99-46-04  
**Барнаул** (3852)73-04-60  
**Белгород** (4722)40-23-64  
**Благовещенск** (4162)22-76-07  
**Брянск** (4832)59-03-52  
**Владивосток** (423)249-28-31  
**Владикавказ** (8672)28-90-48  
**Владимир** (4922)49-43-18  
**Волгоград** (844)278-03-48  
**Вологда** (8172)26-41-59  
**Воронеж** (473)204-51-73  
**Екатеринбург** (343)384-55-89  
**Иваново** (4932)77-34-06  
**Ижевск** (3412)26-03-58  
**Иркутск** (395)279-98-46  
**Казань** (843)206-01-48

**Калининград** (4012)72-03-81  
**Калуга** (4842)92-23-67  
**Кемерово** (3842)65-04-62  
**Киров** (8332)68-02-04  
**Коломна** (4966)23-41-49  
**Кострома** (4942)77-07-48  
**Краснодар** (861)203-40-90  
**Красноярск** (391)204-63-61  
**Курган** (3522)50-90-47  
**Курск** (4712)77-13-04  
**Липецк** (4742)52-20-81  
**Магнитогорск** (3519)55-03-13  
**Москва** (495)268-04-70  
**Мурманск** (8152)59-64-93  
**Набережные Челны** (8552)20-53-41  
**Нижний Новгород** (831)429-08-12  
**Новокузнецк** (3843)20-46-81  
**Новосибирск** (383)227-86-73  
**Ноябрьск**(3496)41-32-12

**Омск** (3812)21-46-40  
**Орел** (4862)44-53-42  
**Оренбург** (3532)37-68-04  
**Пенза** (8412)22-31-16  
**Пермь** (342)205-81-47  
**Петрозаводск** (8142)55-98-37  
**Псков** (8112)59-10-37  
**Ростов-на-Дону** (863)308-18-15  
**Рязань** (4912)46-61-64  
**Самара** (846)206-03-16  
**Санкт-Петербург** (812)309-46-40  
**Саранск** (8342)22-96-24  
**Саратов** (845)249-38-78  
**Севастополь** (8692)22-31-93  
**Симферополь** (3652)67-13-56  
**Смоленск** (4812)29-41-54  
**Сочи** (862)225-72-31  
**Ставрополь** (8652)20-65-13  
**Сургут** (3462)77-98-35

**Сыктывкар** (8212)25-95-17  
**Тамбов** (4752)50-40-97  
**Тверь** (4822)63-31-35  
**Тольятти** (8482)63-91-07  
**Томск** (3822)98-41-53  
**Тула** (4872)33-79-87  
**Тюмень** (3452)66-21-18  
**Улан-Удэ** (3012)59-97-51  
**Ульяновск** (8422)24-23-59  
**Уфа** (347)229-48-12  
**Хабаровск** (4212)92-98-04  
**Чебоксары** (8352)28-53-07  
**Челябинск** (351)202-03-61  
**Череповец** (8202)49-02-64  
**Чита** (3022)38-34-83  
**Якутск** (4112)23-90-97  
**Ярославль** (4852)69-52-93

**Россия** +7(495)268-04-70

**Казахстан** +7(7172)727-132

**Киргизия** +996(312)96-26-47

<https://gea.nt-rt.ru/> || [gsg@nt-rt.ru](mailto:gsg@nt-rt.ru)