

По вопросам продаж и поддержки обращайтесь:

Алматы (7273)495-231  
Ангарск (3955)60-70-56  
Архангельск (8182)63-90-72  
Астрахань (8512)99-46-04  
Барнаул (3852)73-04-60  
Белгород (4722)40-23-64  
Благовещенск (4162)22-76-07  
Брянск (4832)59-03-52  
Владивосток (423)249-28-31  
Владикавказ (8672)28-90-48  
Владимир (4922)49-43-18  
Волгоград (844)278-03-48  
Вологда (8172)26-41-59  
Воронеж (473)204-51-73  
Екатеринбург (343)384-55-89  
Иваново (4932)77-34-06  
Ижевск (3412)26-03-58  
Иркутск (395)279-98-46  
Казань (843)206-01-48

Калининград (4012)72-03-81  
Калуга (4842)92-23-67  
Кемерово (3842)65-04-62  
Киров (8332)68-02-04  
Коломна (4966)23-41-49  
Кострома (4942)77-07-48  
Краснодар (861)203-40-90  
Красноярск (391)204-63-61  
Курган (3522)50-90-47  
Курск (4712)77-13-04  
Липецк (4742)52-20-81  
Магнитогорск (3519)55-03-13  
Москва (495)268-04-70  
Мурманск (8152)59-64-93  
Набережные Челны (8552)20-53-41  
Нижний Новгород (831)429-08-12  
Новокузнецк (3843)20-46-81  
Новосибирск (383)227-86-73  
Ноябрьск (3496)41-32-12

Омск (3812)21-46-40  
Орел (4862)44-53-42  
Оренбург (3532)37-68-04  
Пенза (8412)22-31-16  
Пермь (342)205-81-47  
Петрозаводск (8142)55-98-37  
Псков (8112)59-10-37  
Ростов-на-Дону (863)308-18-15  
Рязань (4912)46-61-64  
Самара (846)206-03-16  
Санкт-Петербург (812)309-46-40  
Саранск (8342)22-96-24  
Саратов (845)249-38-78  
Севастополь (8692)22-31-93  
Симферополь (3652)67-13-56  
Смоленск (4812)29-41-54  
Сочи (862)225-72-31  
Ставрополь (8652)20-65-13  
Сургут (3462)77-98-35

Сыктывкар (8212)25-95-17  
Тамбов (4752)50-40-97  
Тверь (4822)63-31-35  
Тольятти (8482)63-91-07  
Томск (3822)98-41-53  
Тула (4872)33-79-87  
Тюмень (3452)66-21-18  
Улан-Удэ (3012)59-97-51  
Ульяновск (8422)24-23-59  
Уфа (347)229-48-12  
Хабаровск (4212)92-98-04  
Чебоксары (8352)28-53-07  
Челябинск (351)202-03-61  
Череповец (8202)49-02-64  
Чита (3022)38-34-83  
Якутск (4112)23-90-97  
Ярославль (4852)69-52-93

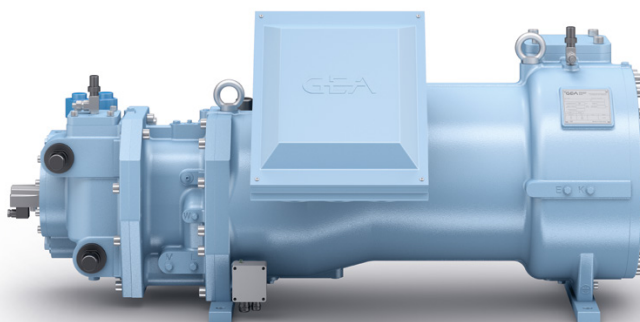
Россия +7(495)268-04-70

Казахстан +7(7172)727-132

Киргизия +996(312)96-26-47

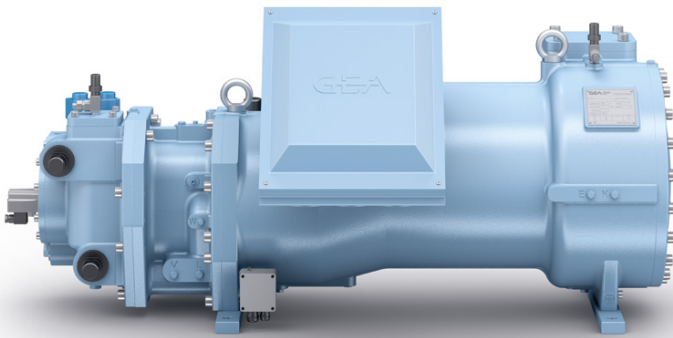
<https://gea.nt-rt.ru/> || [gsg@nt-rt.ru](mailto:gsg@nt-rt.ru)

# ВИНТОВЫЕ КОМПРЕССОРЫ GRASSO X, COMPAK Технические характеристики



# GEA COMPAX 350 AND GEA COMPAX 400.

These two brand-new models extend our semi-hermetic screw compressor series, which can now cater for all capacity requirements, whether large, medium, or small. The screws are also available with the brand-new GEA Grasso X package and with the enhanced GEA BluX semi-hermetic chiller. The new components provide a sustainable and cost-efficient solution for many features and highlights. Read on to learn more about the key benefits.



## **Sustainability**

- Low energy consumption saving resources
- Natural refrigerant ammonia with zero global warming and zero ozone depletion potential

## **Availability**

- Enhanced operating range, serves many applications
- Low maintenance for less downtime
- Wide speed and capacity range

## **Ultra-compact**

- Compact build thanks to high integration level
- Large capacity range, less units required
- Packaged equipment with space-saving multiple compressor arrangement

## **Efficiency**

- Highest volumetric efficiency with NH<sub>3</sub>
- Efficient motor cooling
- Very low maintenance efforts
- Large speed range 1,200 to 6,000 min<sup>-1</sup> for highest efficiencies in all loads

## **Safety**

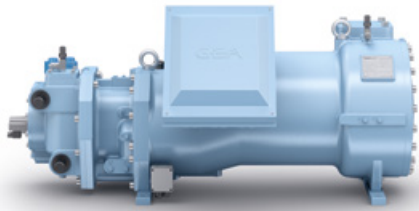
- High integration level
- Fewer external connections
- No shaft seal
- Reduced leakage risk
- Reliable safety devices

## **Reliability**

- Robust, high-integrated design reduces downtime
- Packaged equipment including high-end components
- Experience from many decades of successful refrigeration know-how

## **Reduced costs**

- Low energy costs thanks to high efficiency
- Low charges and less spare parts reducing service expenses
- Low footprint and easy handling, less effort
- Large capacity range, less units and investment required



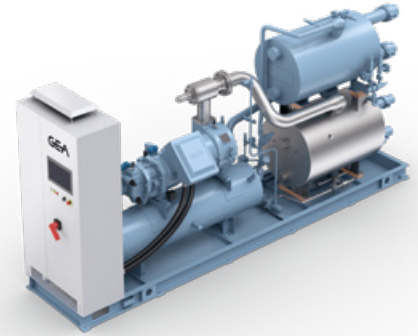
## GEA CompaX

- Swept volume flow at 50 Hz / 100/87 Hz: 321 – 744 m<sup>3</sup>/h
- Operating temps -20°C – +55°C
- Speed 1,200 – 6,000 rpm



## GEA Grasso X

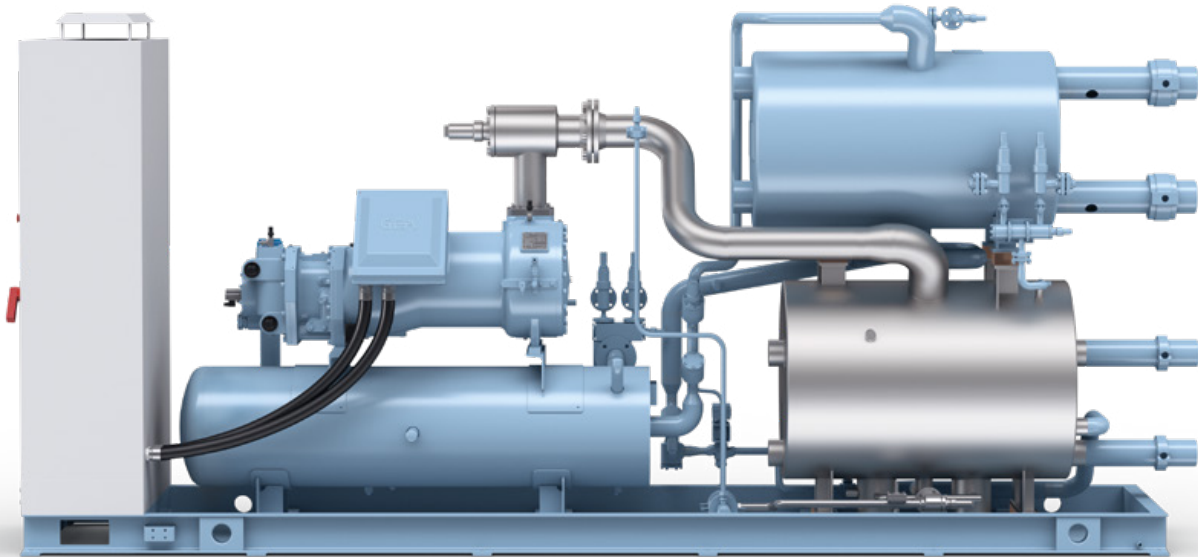
- Available with one compressor
- Available optionally with two, three or four compressors parallel
- 200 – 1,900 kW cooling capacity (-10/+35 °C)
- GEA Omni control panel included
- Project-specific oil management design
- Including 5-step safety chain against excess pressure



## GEA BluX

- Available as single or duo version
- 350 – 1,500 kW cooling capacity (cold water +12/+7 °C, ambient condensing, speed from 3,000 to 6,000 min<sup>-1</sup>)
- Complete power panel with inverter and GEA Omni control panel
- In compliance with the F-gas regulation
- Ready to plug-and-play

# TECHNICAL DATA.



Series	Type	Swept volume flow at 50 Hz / 100/87 Hz <sup>1</sup>		Cooling capacity at max. Hz		Dimensions (mm)			Weight
		m <sup>3</sup> /h		kW R717, 0/+30 °C		L	W	H	kg
<b>GEA CompaX</b>	350	321 / 642		635		1,434	797	656	794
	400	372 / 744		745		1,463	797	656	807

Series	Type	Speed rpm	Cooling capacity			Dimensions (mm)			Weight
			R717 -10/+35 °C	R717 -20/+25 °C	R717 +10/+50 °C <sup>2</sup>	L	W	H	kg
<b>GEA Grasso X</b>	E1	6,000	395	270	780	2,500	1,150	1,850	1,950
	G1	6,000	475	325	945	2,500	1,150	1,850	1,975
	E2	6,000	790	540	1,560	2,800	1,700	1,950	3,200
	G2	6,000	950	650	1,890	2,800	1,800	1,950	3,975
	E3	6,000	1,185	810	2,340	4,400	1,700	2,400	4,900
	G3	6,000	1,425	975	2,835	4,400	1,800	2,400	5,800
	E4	6,000	1,580	1,080	–	4,900	1,700	2,400	6,300
	G4	6,000	1,900	1,300	–	4,900	1,800	2,400	6,600

Series	Type	Cooling capacity <sup>3</sup>	Condensing capacity	EER	R717 charge	Dimensions (mm)			Weight
		kW R717, +12/+7 °C	kW Air in +35 °C			L	W	H	kg
<b>GEA BluX</b>	350	635	–	4.2	35	5,100	1,000	2,100	5,500
	400	755	–	4.3	40	5,100	1,000	2,100	5,500
<b>GEA BluX duo</b>	350	1,270	–	4.2	57	tbd	tbd	tbd	tbd
	400	1,510	–	4.3	65	tbd	tbd	tbd	tbd

1) Types 350 and 400 max. 100 Hz, types 700 and 900 max. 87 Hz

2) Capacity limited at approx. 2,800 kW

3) Air conditioning application, cooling liquid for +35/+30 °C

По вопросам продаж и поддержки обращайтесь:

**Алматы** (7273)495-231  
**Ангарск** (3955)60-70-56  
**Архангельск** (8182)63-90-72  
**Астрахань** (8512)99-46-04  
**Барнаул** (3852)73-04-60  
**Белгород** (4722)40-23-64  
**Благовещенск** (4162)22-76-07  
**Брянск** (4832)59-03-52  
**Владивосток** (423)249-28-31  
**Владикавказ** (8672)28-90-48  
**Владимир** (4922)49-43-18  
**Волгоград** (844)278-03-48  
**Вологда** (8172)26-41-59  
**Воронеж** (473)204-51-73  
**Екатеринбург** (343)384-55-89  
**Иваново** (4932)77-34-06  
**Ижевск** (3412)26-03-58  
**Иркутск** (395)279-98-46  
**Казань** (843)206-01-48

**Калининград** (4012)72-03-81  
**Калуга** (4842)92-23-67  
**Кемерово** (3842)65-04-62  
**Киров** (8332)68-02-04  
**Коломна** (4966)23-41-49  
**Кострома** (4942)77-07-48  
**Краснодар** (861)203-40-90  
**Красноярск** (391)204-63-61  
**Курган** (3522)50-90-47  
**Курск** (4712)77-13-04  
**Липецк** (4742)52-20-81  
**Магнитогорск** (3519)55-03-13  
**Москва** (495)268-04-70  
**Мурманск** (8152)59-64-93  
**Набережные Челны** (8552)20-53-41  
**Нижний Новгород** (831)429-08-12  
**Новокузнецк** (3843)20-46-81  
**Новосибирск** (383)227-86-73  
**Ноябрьск**(3496)41-32-12

**Омск** (3812)21-46-40  
**Орел** (4862)44-53-42  
**Оренбург** (3532)37-68-04  
**Пенза** (8412)22-31-16  
**Пермь** (342)205-81-47  
**Петрозаводск** (8142)55-98-37  
**Псков** (8112)59-10-37  
**Ростов-на-Дону** (863)308-18-15  
**Рязань** (4912)46-61-64  
**Самара** (846)206-03-16  
**Санкт-Петербург** (812)309-46-40  
**Саранск** (8342)22-96-24  
**Саратов** (845)249-38-78  
**Севастополь** (8692)22-31-93  
**Симферополь** (3652)67-13-56  
**Смоленск** (4812)29-41-54  
**Сочи** (862)225-72-31  
**Ставрополь** (8652)20-65-13  
**Сургут** (3462)77-98-35

**Сыктывкар** (8212)25-95-17  
**Тамбов** (4752)50-40-97  
**Тверь** (4822)63-31-35  
**Тольятти** (8482)63-91-07  
**Томск** (3822)98-41-53  
**Тула** (4872)33-79-87  
**Тюмень** (3452)66-21-18  
**Улан-Удэ** (3012)59-97-51  
**Ульяновск** (8422)24-23-59  
**Уфа** (347)229-48-12  
**Хабаровск** (4212)92-98-04  
**Чебоксары** (8352)28-53-07  
**Челябинск** (351)202-03-61  
**Череповец** (8202)49-02-64  
**Чита** (3022)38-34-83  
**Якутск** (4112)23-90-97  
**Ярославль** (4852)69-52-93

**Россия** +7(495)268-04-70

**Казахстан** +7(7172)727-132

**Киргизия** +996(312)96-26-47

<https://gea.nt-rt.ru/> || [gsg@nt-rt.ru](mailto:gsg@nt-rt.ru)